

7. Human nutrition

7.2 Digestive system

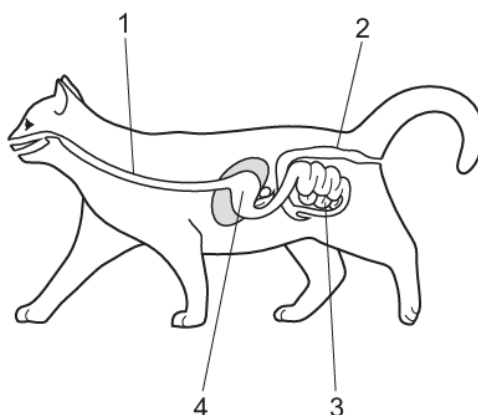
Paper 1 and 2

Question Paper

Paper 1

Questions are applicable for both core and extended candidates

- 1 What is a part of the small intestine?
- A** anus
B colon
C ileum
D rectum
- 2 The diagram shows the alimentary canal and some of the associated organs in a cat. The alimentary canal of a cat is similar to that of a human.

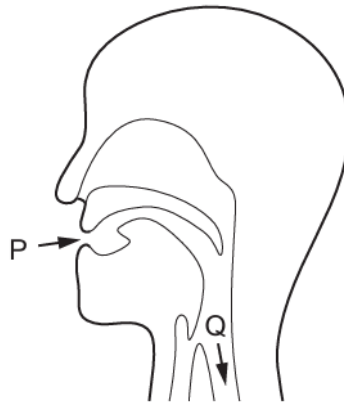


Which row identifies the structures labelled 1–4?

	1	2	3	4
A	oesophagus	anus	large intestine	liver
B	oesophagus	large intestine	small intestine	stomach
C	trachea	anus	large intestine	stomach
D	trachea	large intestine	small intestine	liver

- 3 What is the function of the gall bladder?
- A production of bile
 - B production of gastric juice
 - C storage of bile
 - D storage of gastric juice
- 4 Which organ is part of the digestive system?
- A colon
 - B larynx
 - C vena cava
 - D ureter

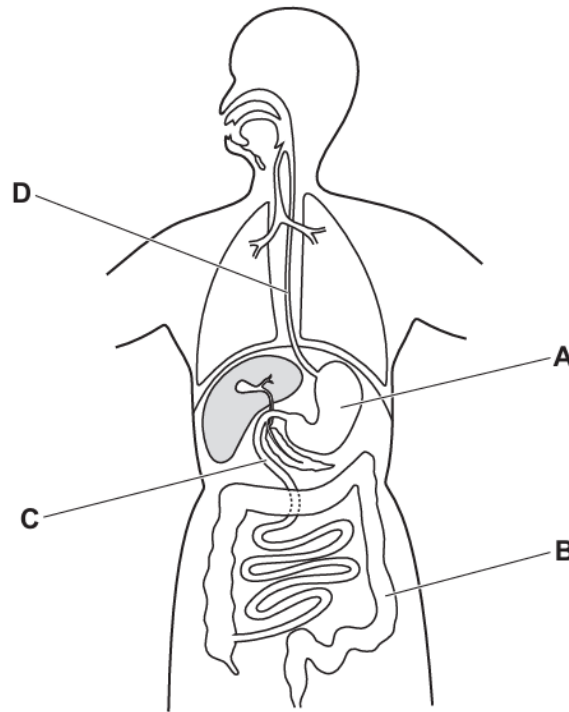
- 5 Which statement about physical digestion is correct?
- A It increases the surface area of food.
 - B It involves enzymes.
 - C It takes place in the mouth only.
 - D It produces smaller molecules.
- 6 Solid food enters the mouth at P and enters the oesophagus at Q.



How does the food at Q differ from the food at P?

- A It contains less fibre.
- B It contains less water.
- C It contains less protein.
- D It contains less starch.

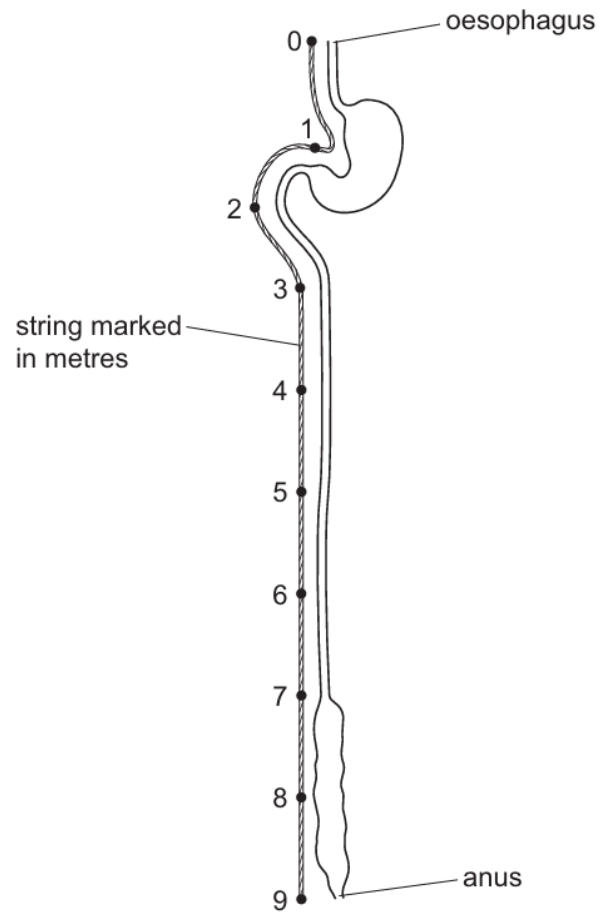
7 Which structure is the duodenum?



8 In which part of the alimentary canal does ingestion take place?

- A anus
- B liver
- C mouth
- D stomach

- 9 The diagram shows the human alimentary canal, with a string marked in metres beside it.



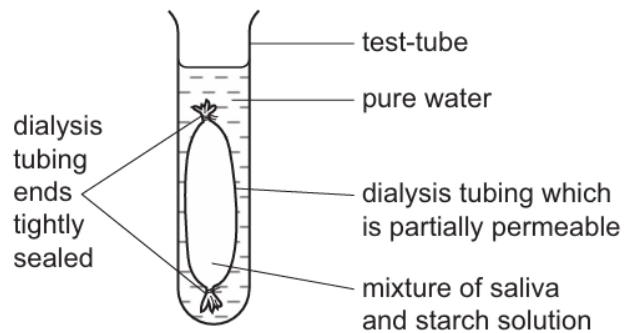
How long is the small intestine?

- A** 2 m **B** 6 m **C** 8 m **D** 9 m
- 10 Which process involves the removal of material from the rectum?
- A** egestion
B ingestion
C chemical digestion
D mechanical digestion

11 Which stage of nutrition takes place when food molecules become part of a body cell?

- A absorption
- B assimilation
- C digestion
- D ingestion

12 The diagram shows the apparatus used in an experiment to demonstrate two processes that take place in the body.



After one hour, the water outside the dialysis tubing contained reducing sugars.

Which two processes are represented by this experiment?

- A absorption and digestion
- B absorption and egestion
- C digestion and egestion
- D digestion and ingestion

13 Which organ is part of the digestive system?

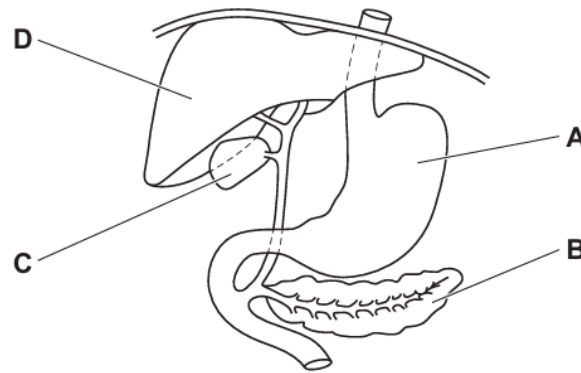
- A colon
- B larynx
- C trachea
- D ureter

Paper 2

Questions are applicable for both core and extended candidates

- 14 The diagram shows part of the alimentary canal and associated organs.

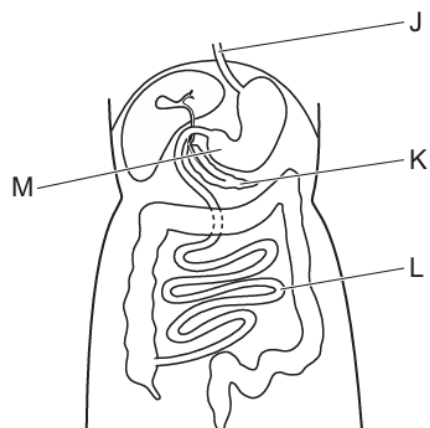
Which labelled part stores bile?



- 15 Which group of organs belongs to the same organ system?

- A diaphragm, oesophagus, trachea
- B heart, liver, lungs
- C heart, stomach, trachea
- D oesophagus, intestine, stomach

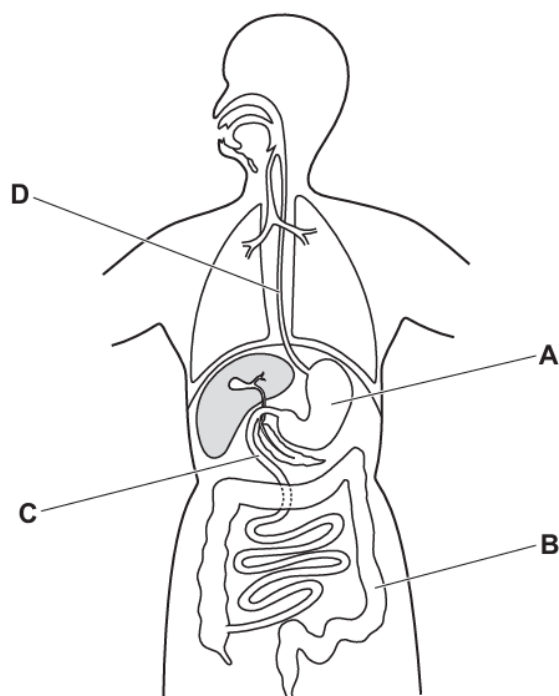
16 The diagram shows part of the alimentary canal.



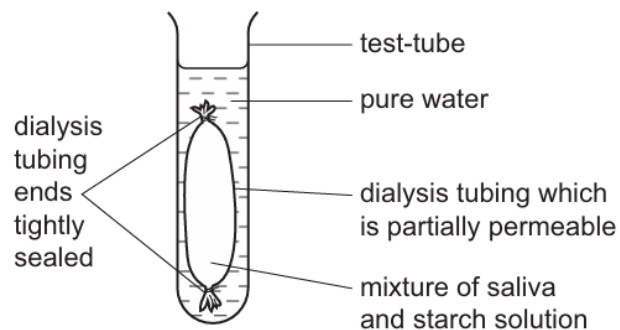
Which row correctly identifies the structures labelled J to M?

	J	K	L	M
A	oesophagus	pancreas	small intestine	stomach
B	pancreas	small intestine	stomach	oesophagus
C	small intestine	stomach	oesophagus	pancreas
D	stomach	oesophagus	pancreas	small intestine

17 Which structure is the duodenum?



- 18 Which stage of nutrition takes place when food molecules become part of a body cell?
- A absorption
 - B assimilation
 - C digestion
 - D ingestion
- 19 The diagram shows the apparatus used in an experiment to demonstrate two processes that take place in the body.



After one hour, the water outside the dialysis tubing contained reducing sugars.

Which two processes are represented by this experiment?

- A absorption and digestion
- B absorption and egestion
- C digestion and egestion
- D digestion and ingestion